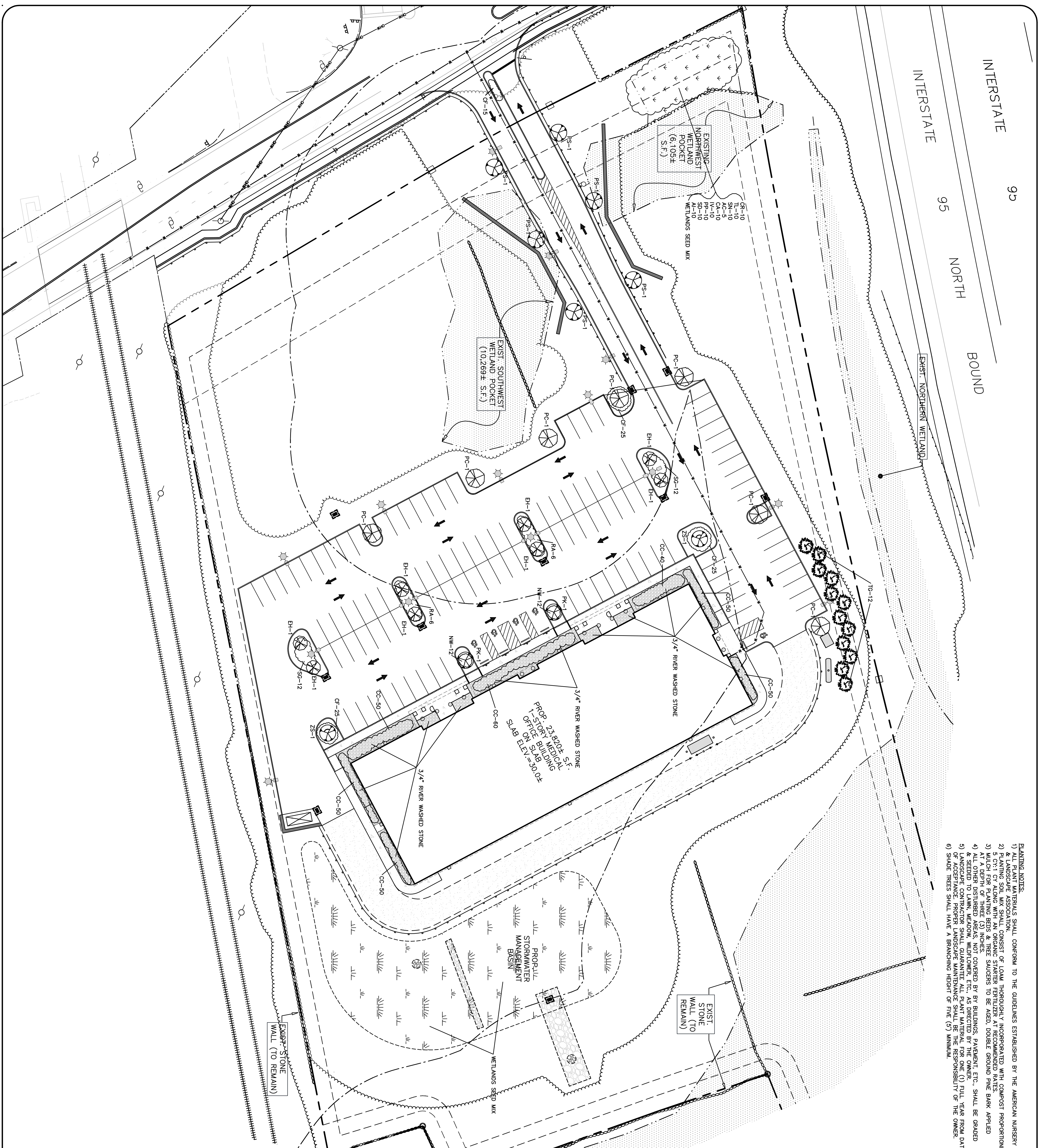


93
95
NORTH
BOUND
INTERSTATE



- PLANTING NOTES:
- 1) ALL PLANT MATERIALS SHALL CONFORM TO THE GUIDELINES ESTABLISHED BY THE AMERICAN NURSERY & LANDSCAPE ASSOCIATION.
 - 2) PLANTING SOIL MIX SHALL CONSIST OF LOAM THOROUGHLY INCORPORATED WITH COMPOST PROPORTIONED AS FOLLOWS: 10% COMPOST, 10% PERENNIAL FESCUE, 10% BLUE STEM BENTON GRASS, 10% RED TOP, 10% BIRD'S FOOT TROFOLI, 10% PLEISTOCENE SAND, 10% 1/4\"/>

KEY QUANT.	COMMON NAME	BOTANICAL NAME	SIZE
AC	5	SHAGON CLUMP	2'-2.5' HT.
AI	10	SWAMP MILKWED	18\"/>
CA	10	SILKY DOGWOOD	18\"/>
CC	340	BIRCHBERRY	1 QUART
CC	90	RED FORESTER GRASS	2 GAL.
CR	8	RED TNG DOGWOOD	18\"/>
EH	8	COL. EUROPEAN HORNBEAM	2\"/>
IV	10	WINTERBERRY HOLLY	18\"/>
NW	24	CALMINT	2 GAL.
PC	7	GLEEFIELD SELECT PEAR	3\"/>
PK	2	KWANZAN CHERRY	2\"/>
PP	10	RED CHICKENBERRY	18\"/>
PS	6	ALTIUM CHERRY	3\"/>
RA	12	GR. LOW SWIAC	3 GAL.
SD	10	PUSSY WILLOW	18\"/>
SG	24	SEA GREEN JUNIBERU	15\"/>
SN	10	INDIAN GRASS	12\"/>
TO	12	GREEN GIANT AMBOVIVE	8-7\"/>
TL	10	COMMON CATTALS	12\"/>
ZS	2	GREENWAVE ZEALOVA	2\"/>

COMMON NAME	BOTANICAL NAME
LURID SEDGE	CAREX LURIDA
BLUNT BROOM SEDGE	CAREX SCOPARIA
BLUE VERNAIN	VERBENA HASTATA
HOP SEDGE	CAREX LUPULINA
GREEN BULRUSH	SORBUS ATROROVENS
REDTOP PANIC GRASS	PANICUM RIGIDULUM
TUFTED HANGWASS	DESCHAMPSIA CESPYTOSA
TICKSEED SUNFLOWER/BUR MARIGOLD	BIDENS ARISTOSA
CREeping SPIKE RUSH	ELEOCHARIS PALUSTRIS
SOFT RUSH	JUNCUS EFFUSUS
FRINGED SEDGE	CAREX GRINATA
SQUARE STEMMED MONKEY FLOWER	MIMULUS RINGENS
SWAMP ASTER	ASTER PUNICUS
BONSET	EPIPTORHUM PERFORLATUM
RATTLESHAKE GRASS	GLYCEMA CANADENSIS
SWAMP MILKWED	ASCLEPIAS INCANATA
COMMON SNEEZEWEED	HELENIUM AUTUMNALE
DITCH STONECROP	PENTHORUM SEDOIDES

NOTE: UNLESS OTHERWISE INDICATED, ALL DISTURBED AREAS SHALL BE RESTORED TO ORIGINAL CONDITION OR BETTER. ALL SEED MIXTURES SHALL BE IN ACCORDANCE WITH THE MANUFACTURER'S RECOMMENDATIONS.

WETLAND SEED MIX

GRASSES:

- 30% LONGFELLOW II CHENIGUS FESCUE
- 20% BLUE STEM BENTON GRASS
- 20% REDTOP
- 20% BIRD'S FOOT TROFOLI
- SEEDING RATE: 5 LB. S./1000 SF.

DETECTION BASIN SEED MIXTURES:

- 20% GREENING RED FESCUE
- 15% PERENNIAL FESCUE
- 15% SWITGRASS
- 15% REDTOP
- 15% GREEN BULLRUSH
- SEEDING RATE: 15-20 LB. S./AC.

GRASSES WITH FLOWERS:

- 20% GREENING RED FESCUE
- 15% JOE PEE WEE
- 15% NODDING BUR MARIGOLD
- 15% BIRCHBERRY
- 15% BONESET
- SEEDING RATE: 15-20 LB. S./AC.

GRASSES ONLY:

- 20% GREENING RED FESCUE
- 20% GREENING BENTON GRASS
- 20% REDTOP
- 20% SWITGRASS
- SEEDING RATE: 15-20 LB. S./AC.

LANDSCAPE PLAN

SCALE: 1" = 30'

PROJECT: **O & G INDUSTRIES**
52 SPENCER PLAIN RD.
OLD SAYBROOK, CT

DRAWN BY: D.A.N. APPROVED BY: J.W.F.

DATE: 04/18/24 SCALE: AS NOTED

2155 EAST MAIN STREET TORRINGTON, CT 06790
860-482-7613 WWW.BORGHESIBUILDING.COM

REVISIONS

SEAL

W
N
S
E

J.W. FLYNN ASSOC. LLC
LANDSCAPE CONTRACTING
GRANBY, CT.

J.W. FLYNN ASSOC. LLC
LANDSCAPE CONTRACTING
GRANBY, CT.