

PROVIDE 120VAC CONTROL CIRCUIT TO DIV.15 VAV UNITS AS SHOWN ON THE M-DRAWINGS. CIRCUIT BASEMENT UNITS TO ELC#10. SEE PANEL SCHEDULE. (TYP.)

SUMP PUMP WITH CONTROL PANEL
1/4HP 120V 1PH WITH 30A SWITCH

BOILER B-1
1-1/2HP 208V 3PH
WATER HEATER, 120VAC CONTROL
DOMESTIC WATER RECIRC.
1/6HP 120V 1PH
CIRC. PUMP P-1/P-2
3HP 208V 3PH EACH
SAFETY SWITCH BY DIV.16
STARTER BY DIV.15,
INSTALLED BY DIV.16
UNIT HEATER UH-1
1/10HP 120V 1PH
18" CLEAR AREA FOR SPRINKLER
SYSTEM FIRE DEPARTMENT WATER
CONNECTION PIPING
COMMUNICATIONS CONDUIT STUBS ENTER
ELECTRIC ROOM FLOOR AND CONTINUE THROUGH
WALL CHASE AT FIRST FLOOR WORK ROOM TO
ABOVE FIRST FLOOR CEILING ALLOWING CABLE TO
BE ROUTED THROUGH FIRST FLOOR CEILING
SPACE. SEE TELE/DATA RISER DIAGRAM.
EXHAUST FAN EF-7
172W 120V 1PH

- ① SQUARE 'D' 1200A-30-4W
COMBINATION MAIN
BREAKER & C/T CABINET
- ② STAND-BY TRANSFER
SWITCH (PROVIDED BY
OWNER INSTALLED BY DIV.
16)
- ③ DISTRIBUTION
PANEL "DPA"
- ④ DISTRIBUTION
PANEL "DPB"
- ⑤ EMERGENCY LOAD
CENTER ELC

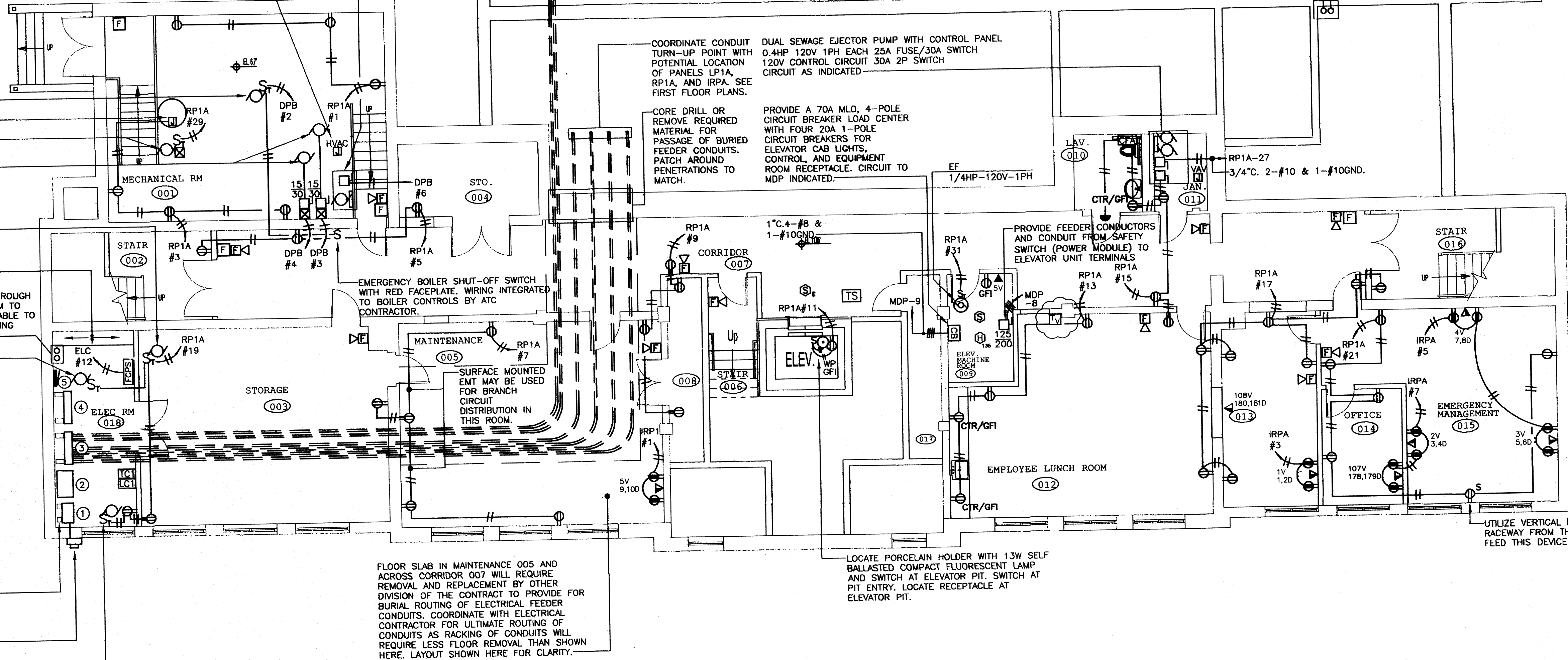
PROVIDE UNISTRUT SUPPORT
SYSTEM BEHIND EQUIPMENT TO
ALLOW FOR HOLDING EQUIPMENT
FRONTS AN EQUAL DISTANCE
FROM WALL. (TYP.)

METERING CONDUIT AND SOCKET AS PER
UTILITY REQUIREMENTS, METER PROVIDED
BY UTILITY. MOUNTING HEIGHT AS PER
UTILITY REQUIREMENTS.

UNIT HEATER UH-2
1/10HP 120V 1PH

BASEMENT POWER PLAN

SCALE: 1/8" = 1'-0"



MAIN STREET SCHOOL ~ OLD SAYBROOK, CONN

DRAWING PREPARED BY

SBC
STRUCTURED
CABLING SYSTEMS

1.800.386.0300

DRAWING TITLE

BASEMENT TELE/COMM LAYOUT

ENGINEER FRANK ANDREWS

REMARKS

DRAWN BY VJP

DATE 07-14-2004

ENGINEERING # XXXXX

SCALE NOT TO SCALE

PAGE 1 OF 1