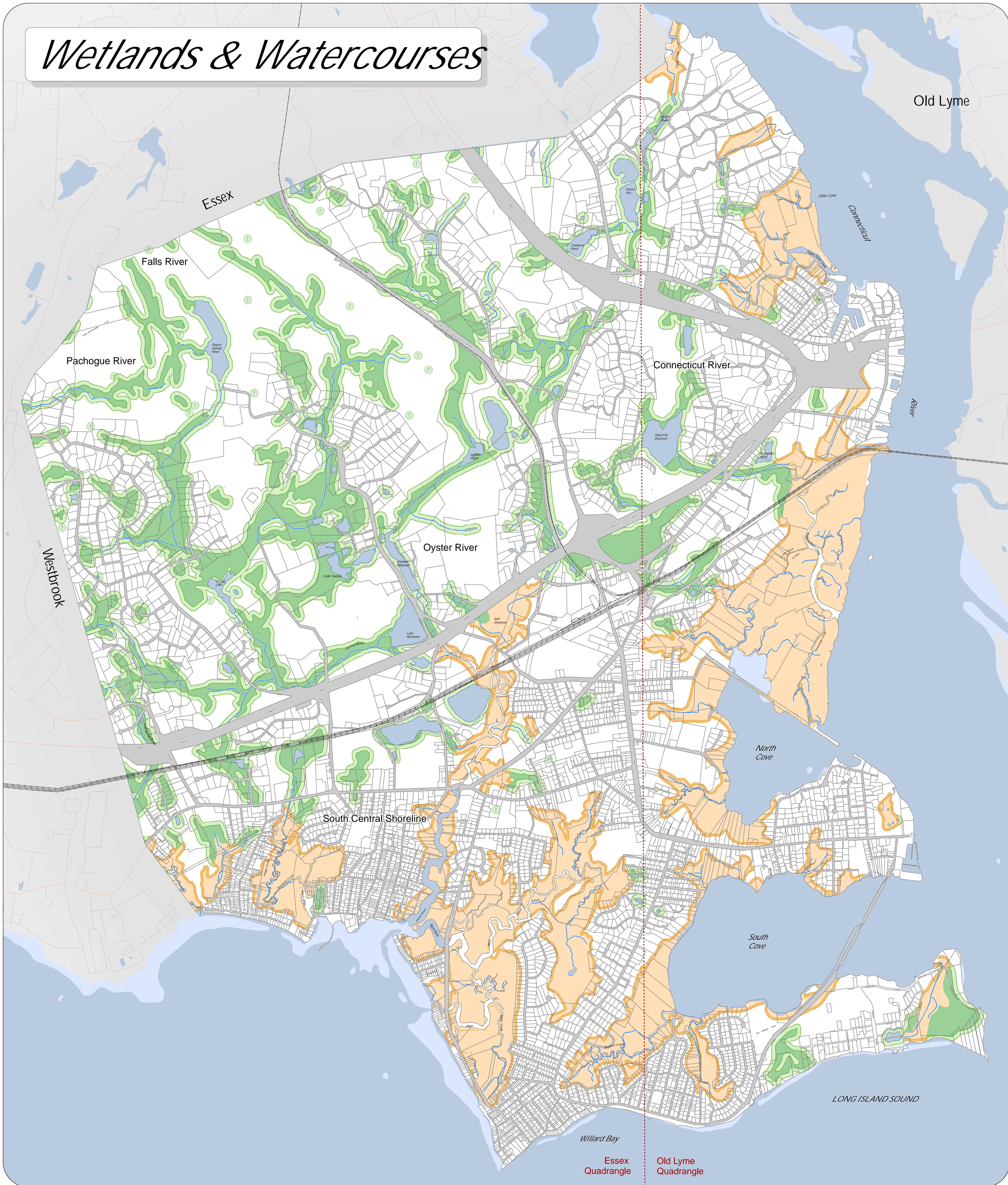


Wetlands & Watercourses



Old Saybrook Wetlands & Watercourses

This map shows wetland soils, watercourses, waterbodies and applicable upland review areas and setbacks within the Town of Old Saybrook. This map is provided as a general reference only and is not to be used for legal or regulatory purposes. According to the CT Inland Wetlands and Watercourses Act (Sec. 22a-42a) and the Town of Old Saybrook regulations (Chapter 301) this map serves as a general guide to wetland locations and states that the precise location of regulated areas shall be determined by the actual character of the land, the distribution of wetland soil types, and locations of watercourses. The absence of wetlands on this map does not serve as exemption from the obligation to confirm on-site conditions.

Amended effective 2/15/07

Inland Wetlands	Water Bodies	USGS Quadrangle Division
100' Upland Review Area	Watershed Boundary	Railroad
Tidal Wetlands	Road Right-of-Way	Potential Vernal Pool
50' Tidal Setback (Zoning)	Highway	Potential Vernal Pool on Lot
Streams	Parcels	

Wetlands and watercourses derived from the following sources:
(1) Wetland soils GIS data layer published in 1995 by USDA, Natural Resources Conservation Service and Connecticut DEP, EGIC. (1:12,000)
(2) Hydrography GIS data layer published in 1995 by CT DEP originated from the USGS quadrangle maps (1:24,000). (3) Aerial photo interpretation of CT DOT aerial photography 2004 (1:10,000). (4) Aerial photo interpretation of Town of Old Saybrook color/NIR aerial photography 2003 (1:10,000)

The Town of Old Saybrook expressly disclaims responsibility for damages or liability that may arise from the use of this map.
Digital Base Map: CT Department of Environmental Protection, Town of Old Saybrook
Parcel Map Updated 10-2006 / Horizontal Datum: North American Datum 1983 (NAD 83)
Spheroid: Lambert Conformal Conic / Units: Feet
Map updated 11/15/06. "wetlands_11_2006.mxd" by OS/UD-GIS



1 inch = 750 feet

